

# Persimmon Knob | 201 ± Acres



## For Sale

\$844,200

## About the Property

Discover your dream home location on this breathtaking 201± acre tract in Morgan County, AL. Nestled on the top of Gum Pond Road, this property offers unparalleled views that will captivate you from the moment you arrive. The property was clear cut this past year leaving a perfect blank canvas, whether you envision a sprawling estate, a cozy country retreat, or a modern masterpiece. There is over 5,500 feet on road frontage on Gum Pond Road and West Fork Cotaco Creek runs along the Northwest portion of the tract.

The property is also being advertised in 30–45-acre tracts if you are looking for something smaller.

Don't miss this rare opportunity to own a piece of paradise in Morgan County. Contact us today for more information and to schedule a viewing.

## Facts and Features

**Morgan County, Alabama**

0 Gum Pond Road Eva, AL 35621

201 ± Acres

Best Use: Residential, Recreational, Farm

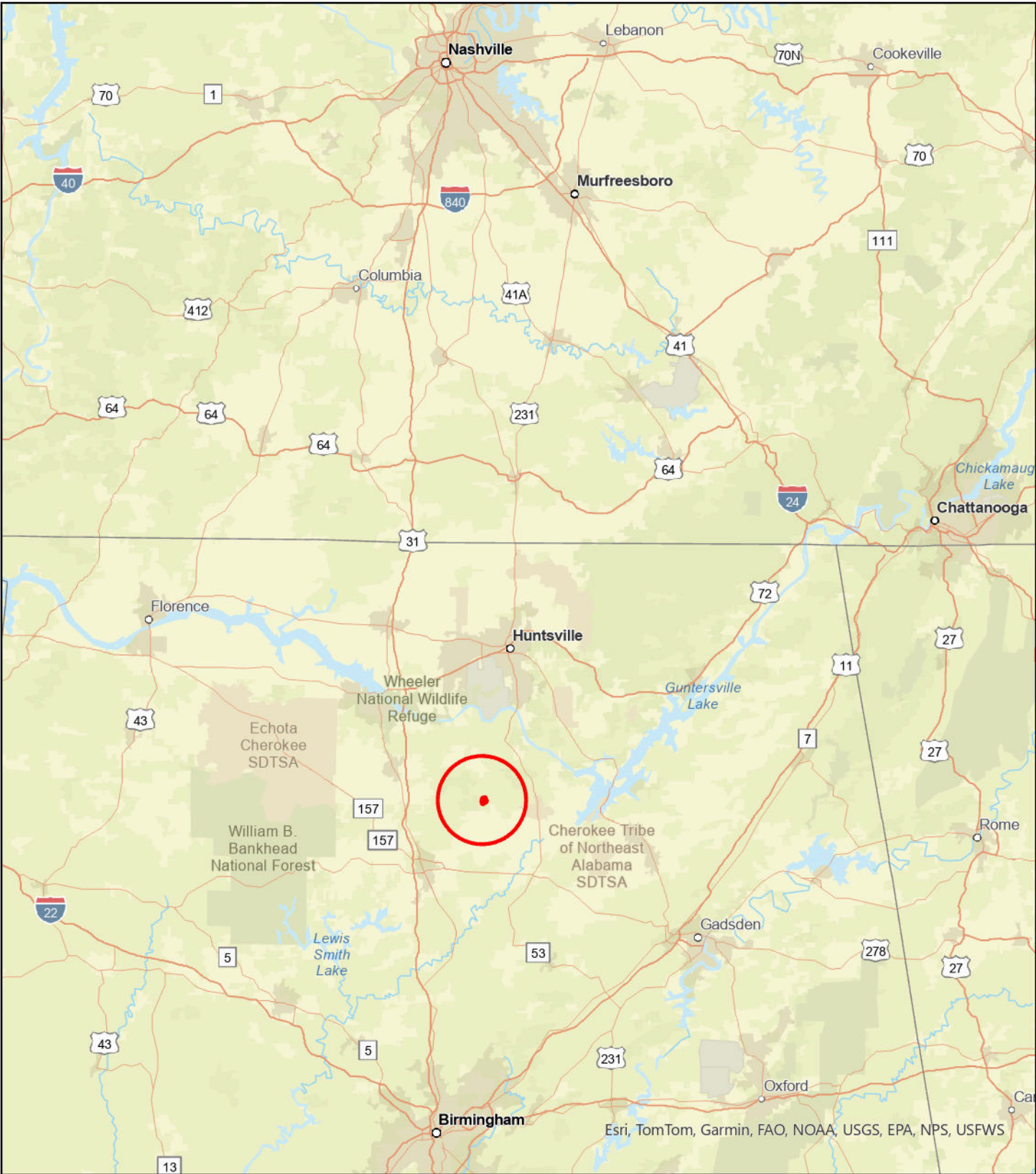


**SOUTH MAIN  
LAND REALTY**

**Hayden Reed**

Office: (256) 383-8990 | Cell: (256) 740-2494  
soldbyhayden@southmainrealty.com

Stephan Tomlinson, Broker




**Legend**

 MGT03

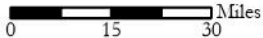
**MGT03**  
**Morgan County, AL**  
**General Location**

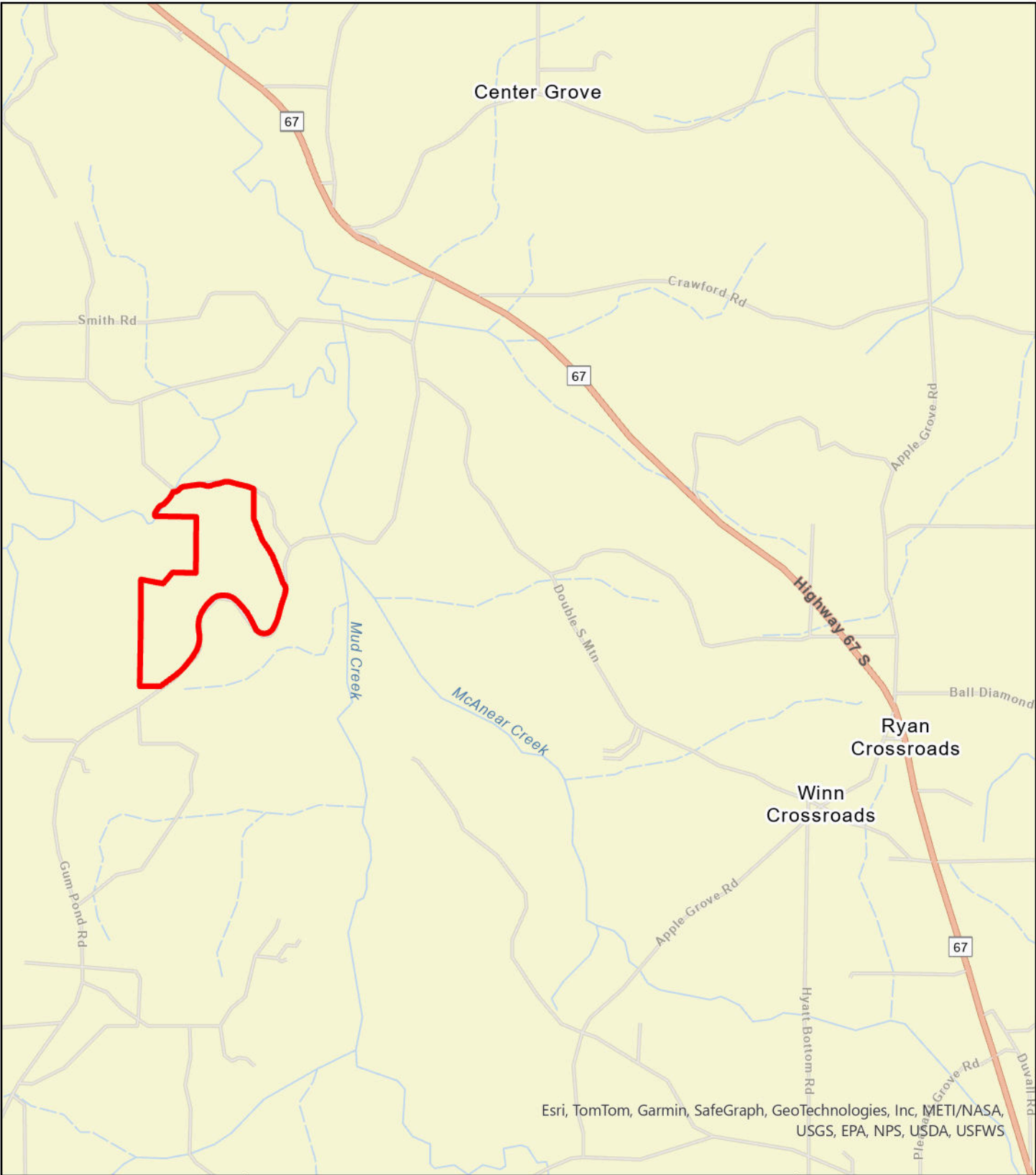
South Main Land Realty | (256) 383-8990

**N**



0 15 30 Miles





Esri, TomTom, Garmin, SafeGraph, GeoTechnologies, Inc, METI/NASA, USGS, EPA, NPS, USDA, USFWS

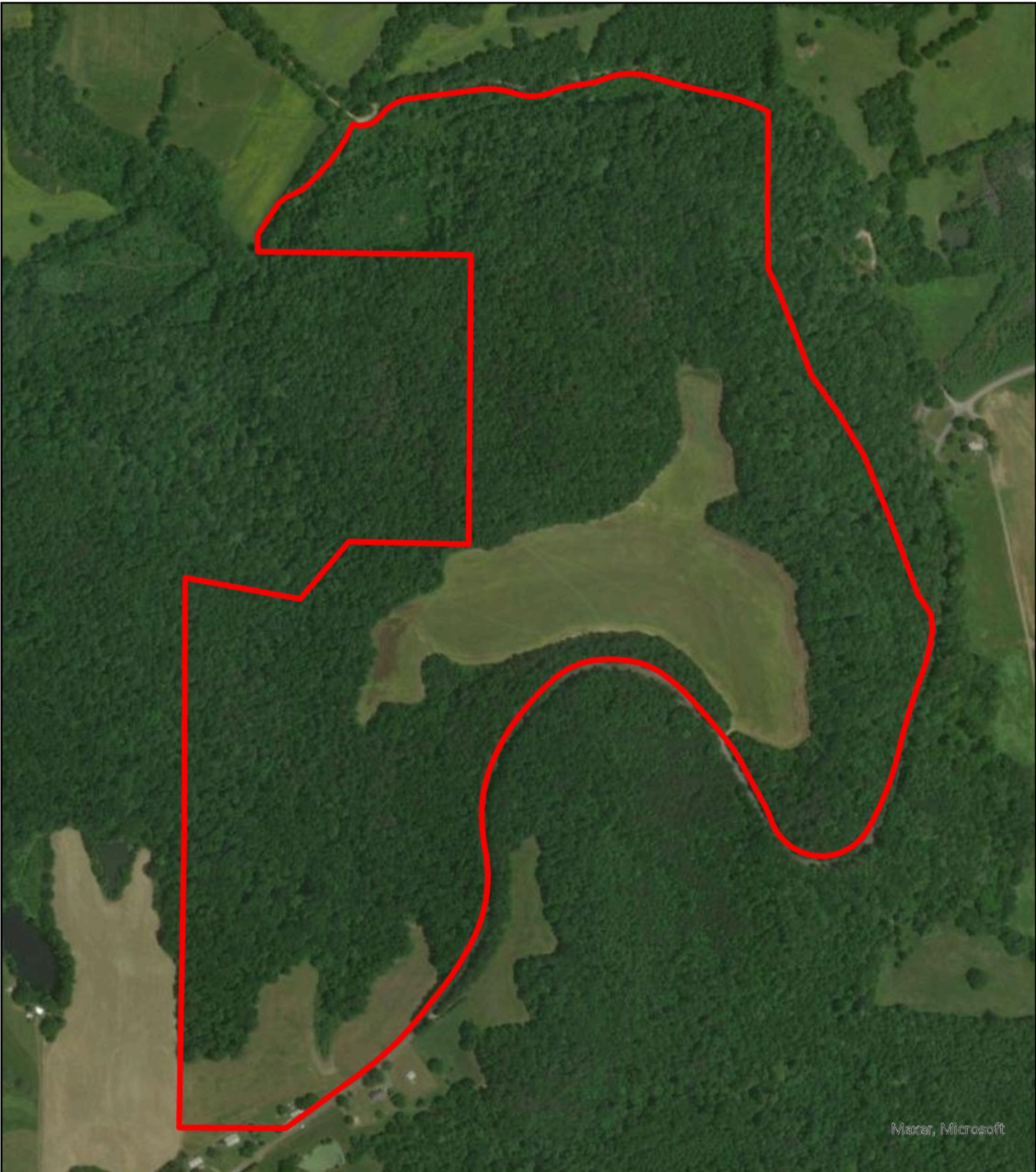
**Legend**

 MGT03

**MGT03  
Morgan County, AL  
Local Roads**

South Main Land Realty | (256) 383-8990





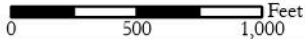
Maxar, Microsoft

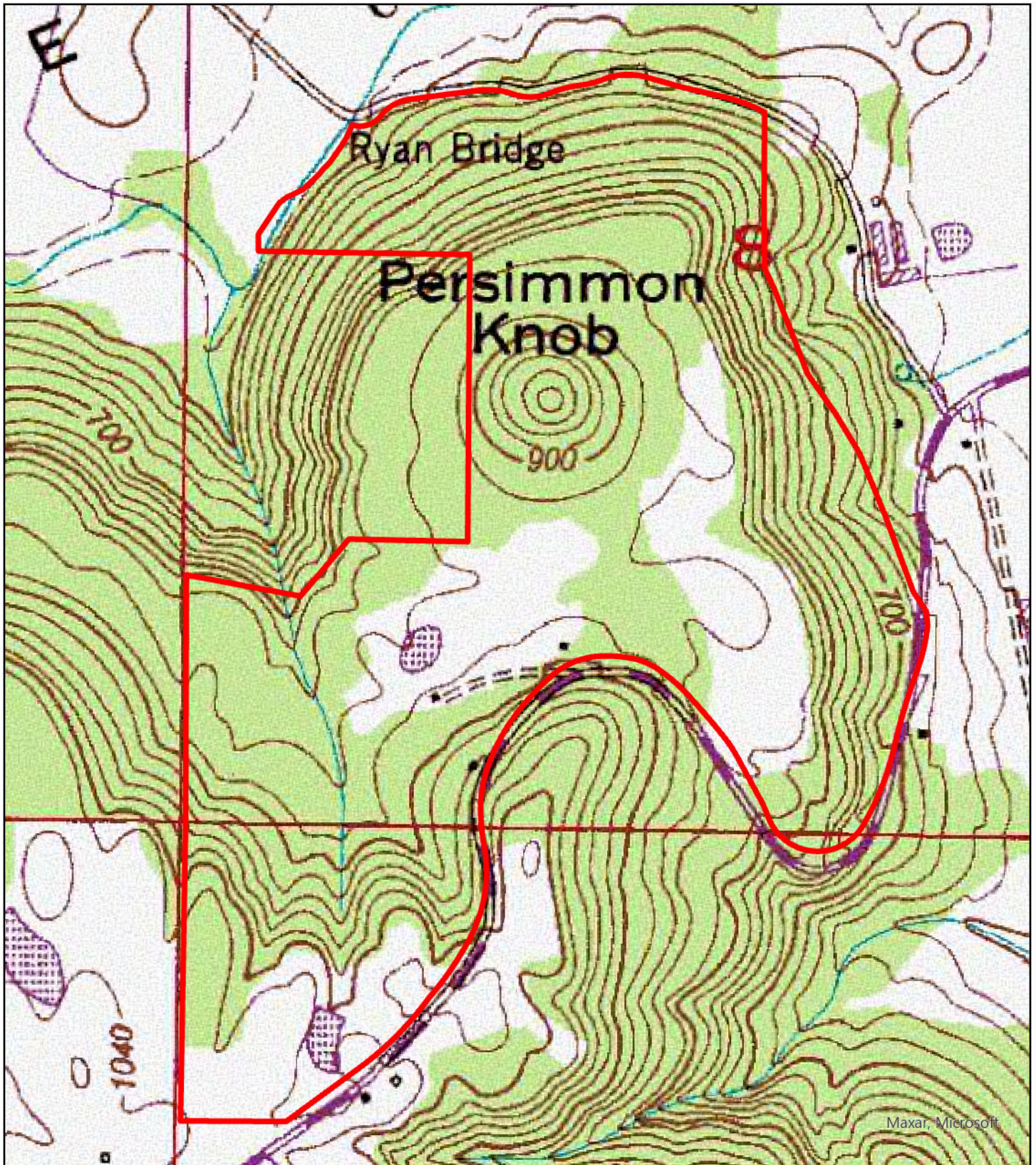
**Legend**

 MGT03

**MGT03**  
**Morgan County, AL**  
**Aerial**

South Main Land Realty | (256) 383-8990





**Legend**

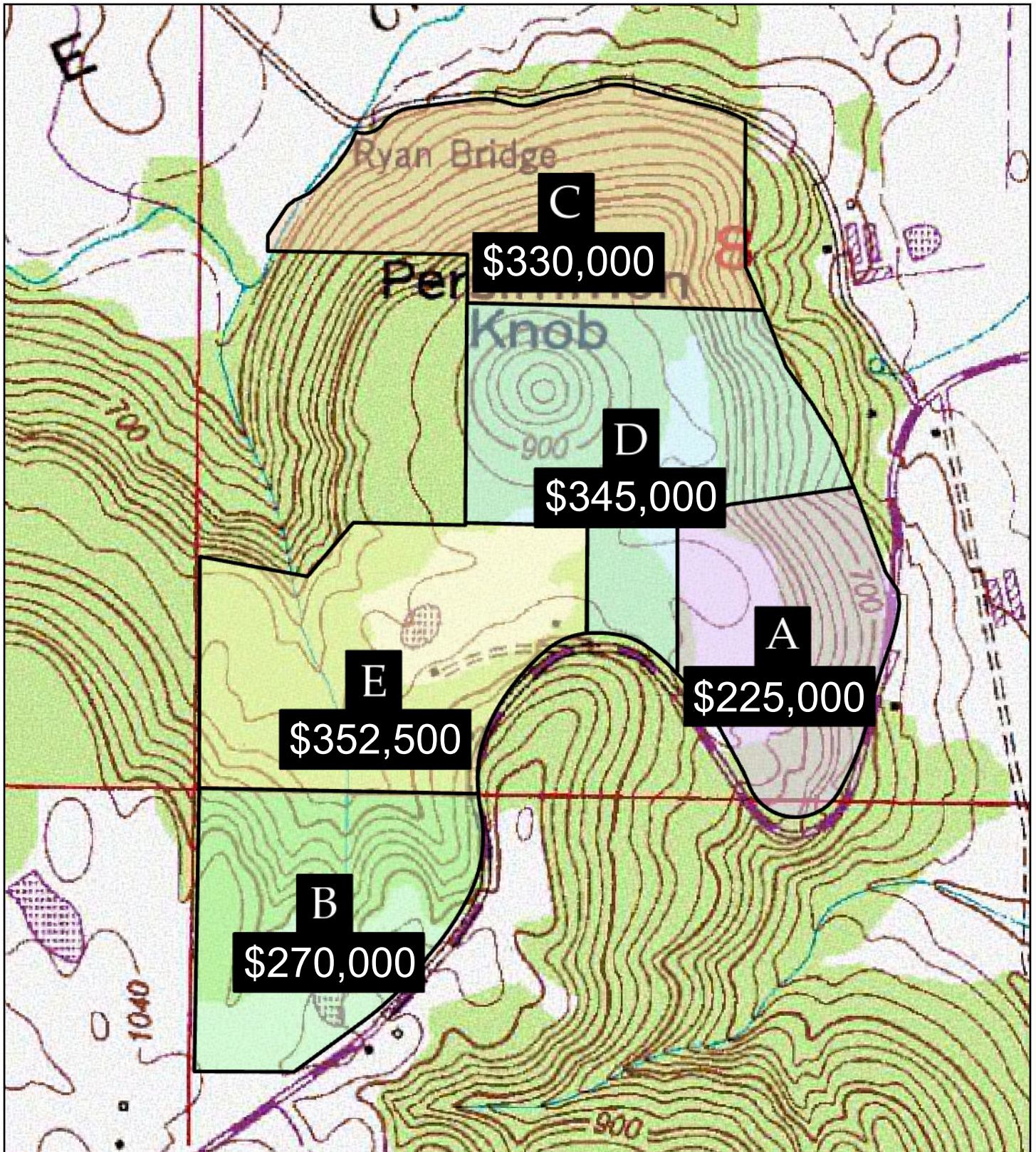
 MGT03

**MGT03**  
**Morgan County, AL**  
**Topo**

South Main Land Realty | (256) 383-8990



0 500 1,000 Feet



**Legend**

- MGT03a 30± Acres
- MGT03b 36± Acres
- MGT03c 44± Acres
- MGT03d 46± Acres
- MGT03e 47± Acres

**MGT03**  
**Morgan County, AL**  
**Available Tracts**

South Main Land Realty | (256) 383-8990

