

# Orme Mountain Retreat | 126.85 ± Acres



## For Sale

\$627,900

## About the Property

Discover a unique opportunity to own a piece of history and natural beauty on Orme Mountain in Marion Co, TN. This expansive 126.85-acre property offers breathtaking views, rich history, and abundant wildlife, all just 15 minutes from downtown South Pittsburg.

This property is a nature lover's dream, offering unparalleled views and a serene, private setting. The recent timber harvest provides a unique opportunity for future land use planning, while the remnants of historical mines add a touch of local heritage and character. The seasonal streams enhance the natural beauty and provide a tranquil ambiance.

Whether you are looking to invest in a large tract of land, seeking a unique recreational property, or dreaming of creating a private retreat, this property on Orme Mountain is a rare find. Don't miss the chance to own a piece of Tennessee's stunning landscape and history.

\* Property is served by a deeded easement. \*

Contact us today to schedule a viewing.

## Facts and Features

**Marion County, Tennessee**

0 State Hwy 156, South Pittsburg, TN, 37380

126.85 ± Acres

Best Use: Recreational, Investment



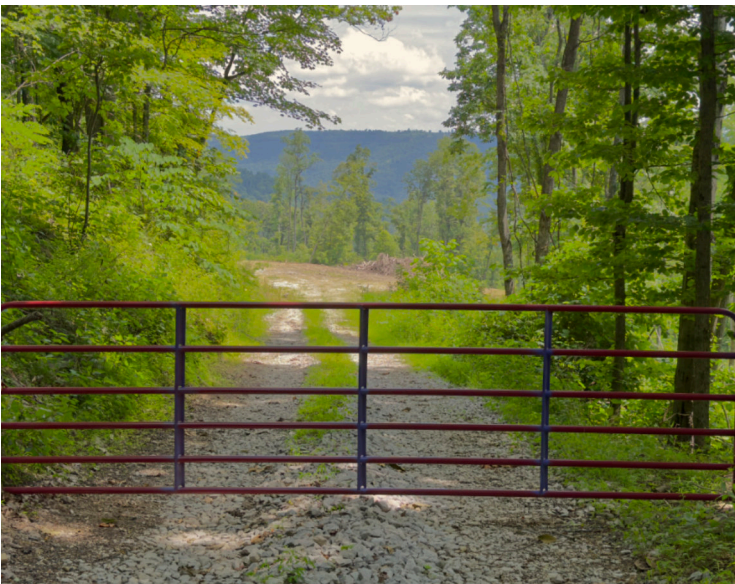
**SOUTH MAIN  
LAND REALTY**

**Hayden Reed**

Office: (256) 383-8990 | Cell: (256) 740-2494  
soldbyhayden@southmainrealty.com

Stephan Tomlinson, Broker

# Orme Mountain Retreat | 126.85 ± Acres

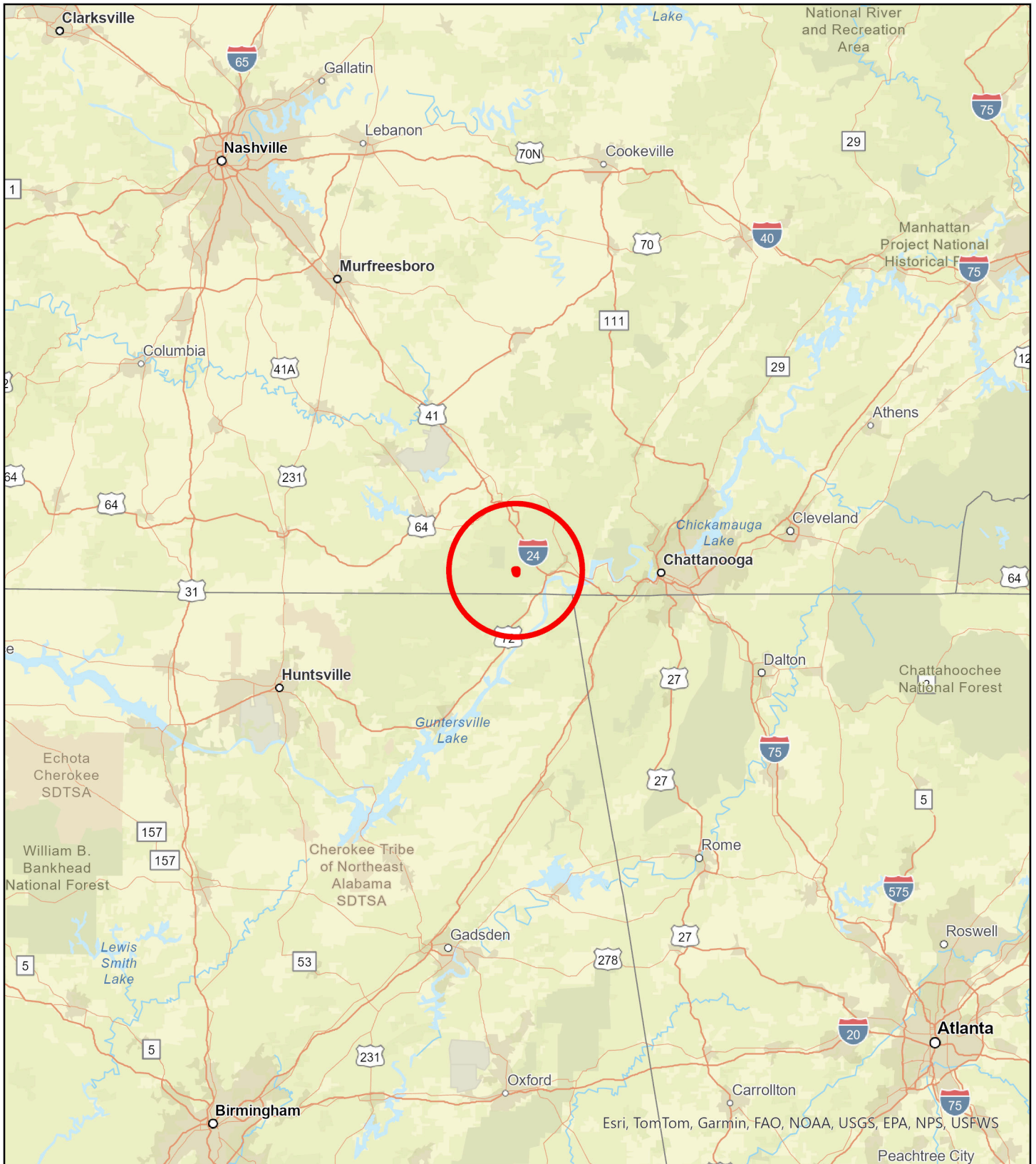


**SOUTH MAIN  
LAND REALTY**

**Hayden Reed**

256-383-2990

[soldbyhayden@southmainrealty.com](mailto:soldbyhayden@southmainrealty.com)

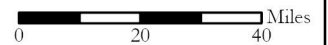


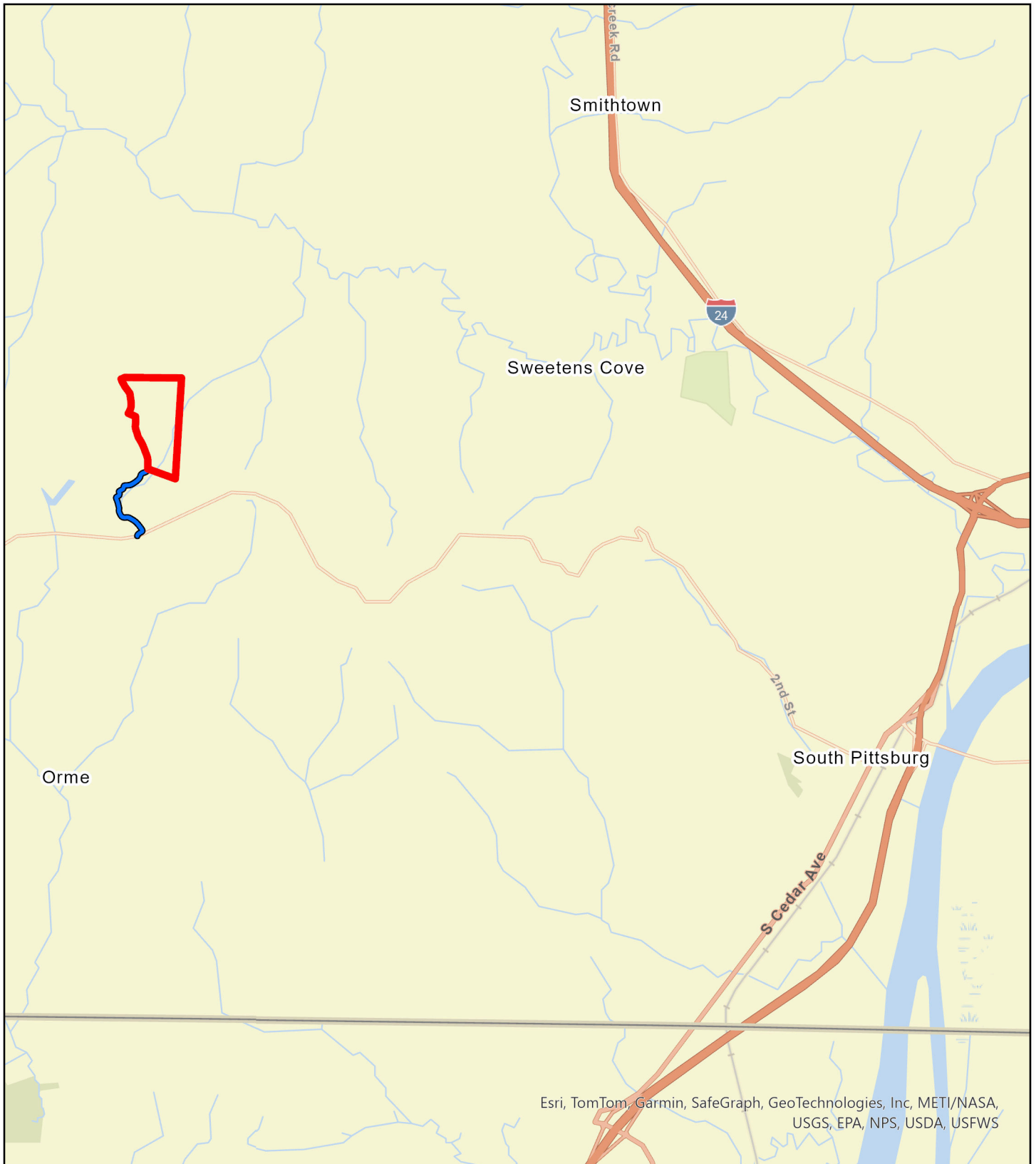
**Legend**

 NDT03

**NDT03  
Marion County, TN  
General Area**

South Main Land Realty | (256) 383-8990





Esri, TomTom, Garmin, SafeGraph, GeoTechnologies, Inc, METI/NASA, USGS, EPA, NPS, USDA, USFWS

**Legend**

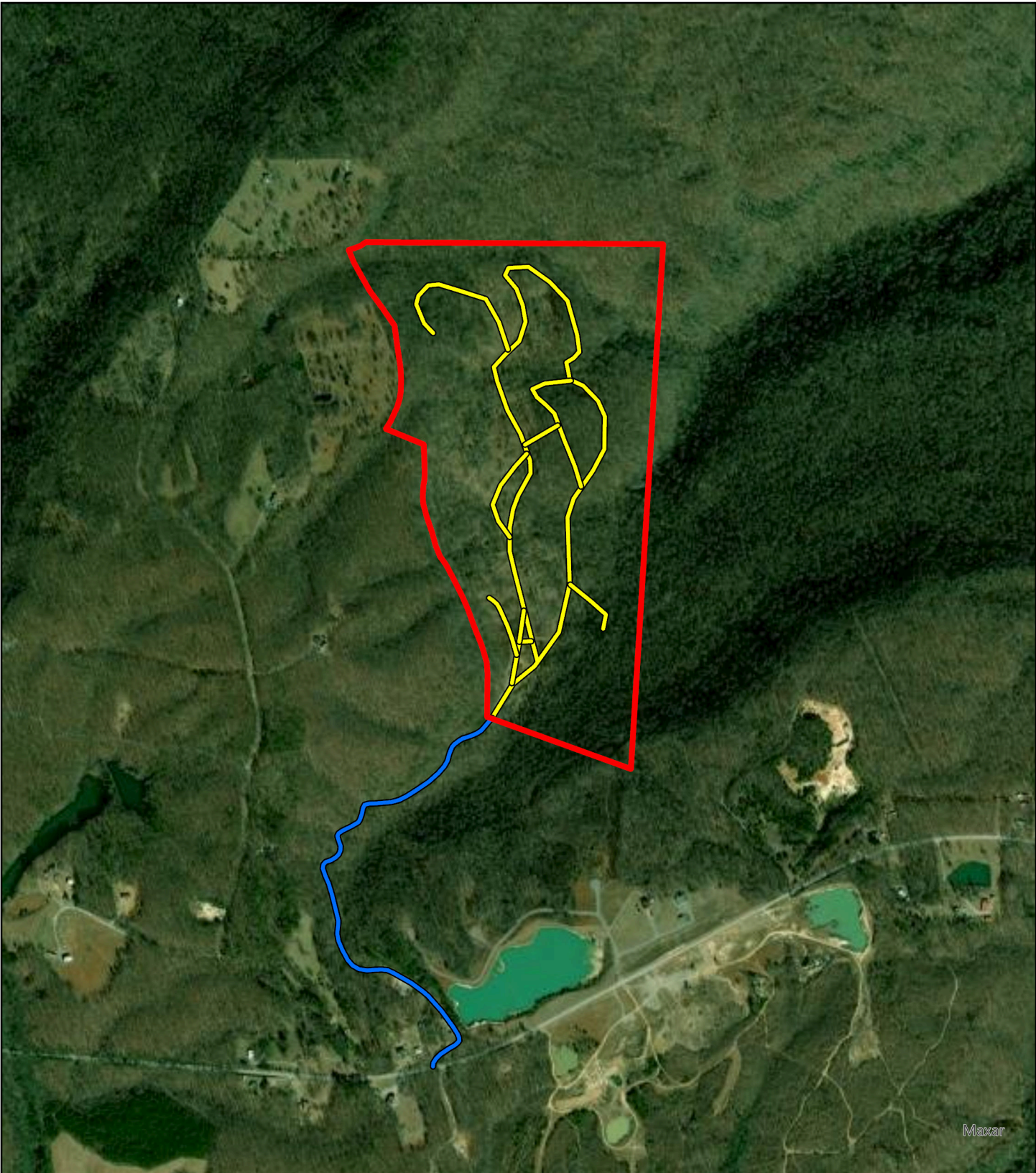
-  NDT03
-  Easement

**NDT03  
Marion County, TN  
Local Roads**



South Main Land Realty | (256) 383-8990





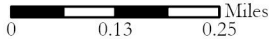
Maxar

**Legend**

-  NDT03
-  Easement
-  Roads

**NDT03  
Marion County, TN  
Easement and Trails**

South Main Land Realty | (256) 383-8990





Maxar, Microsoft

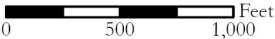
**Legend**

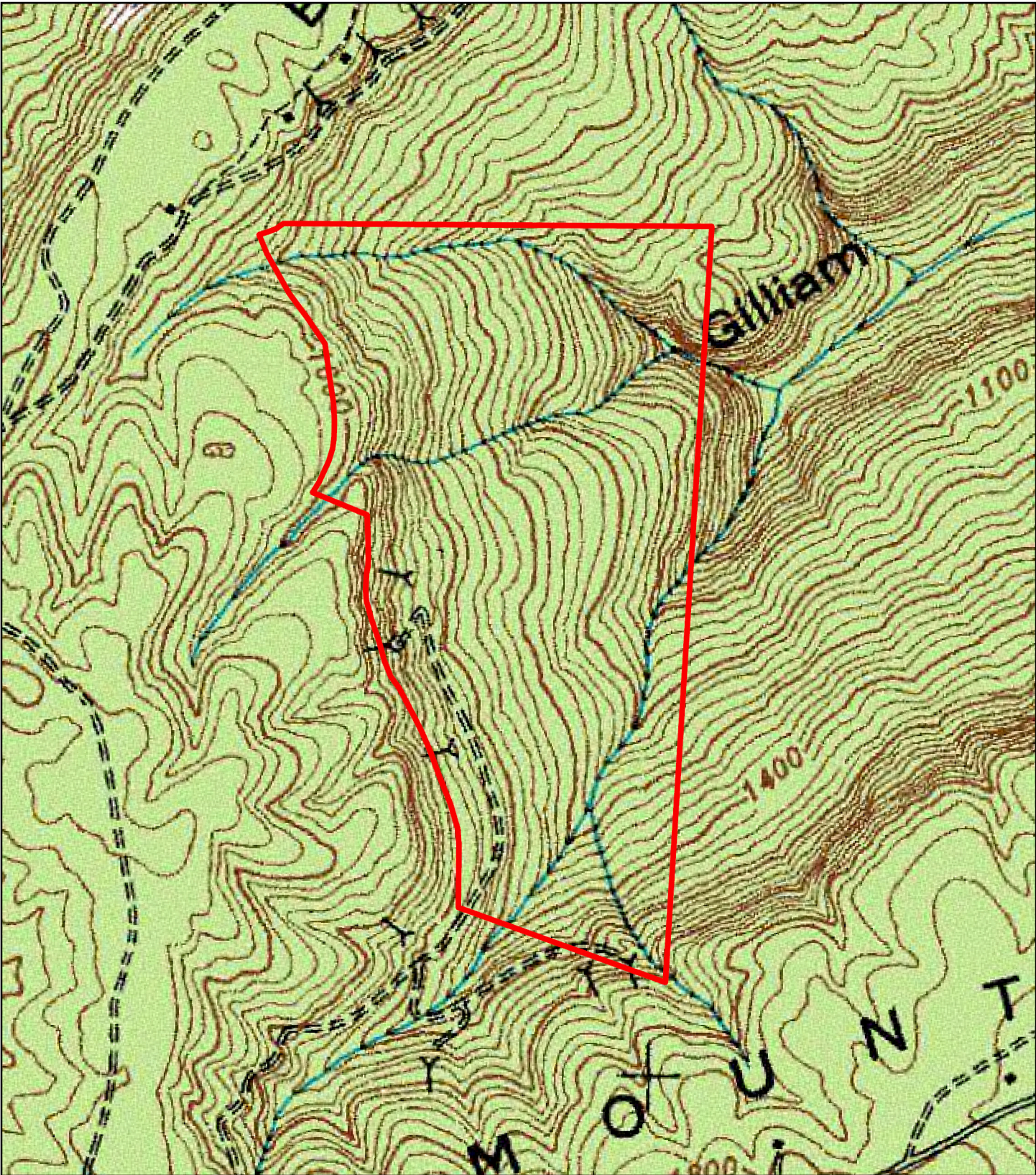
 NDT03

**NDT03  
Marion County, TN  
Aerial**

South Main Land Realty | (256) 383-8990



 Feet



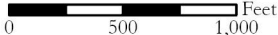
**Legend**

 NDT03

**NDT03  
Marion County, TN  
Topography**






South Main Land Realty | (256) 383-8990



Esri Community Maps Contributors, Esri, TomTom, Garmin, SafeGraph, GeoTechnologies, Inc, METI/NASA, USGS, EPA, NPS, US Census Bureau, USDA, USFWS, Maxar

**Legend**

-  NDT03
-  Roads
-  Trail Markers

**NDT03  
Marion County, TN  
Trails**



South Main Land Realty | (256) 383-8990

